

Lancaster  
University



International Guide  
2024



# Contents

## Why Lancaster?

- 04** Welcome
- 06** Lancaster University highlights
- 08** Discover your new home
- 10** Our campus
- 12** Explore the neighbourhood
- 14** Sustainability
- 16** More than learning
- 22** A world of opportunity
- 24** International partnerships and campuses
- 26** Brightest minds
- 28** Support and wellbeing
- 30** Students' Union, societies and sports
- 32** Nine colleges, one home
- 34** Career focused
- 35** A global network for life
- 38** Funding your studies



## Courses

- 40** Our courses
  - Undergraduate
  - Postgraduate
- 48** Entry requirements
- 50** How to apply

## Useful info

- 52** Where we are
- 53** Getting to Lancaster
- 54** Stay connected
- 55** Important information



# Welcome

## I am delighted that you are considering Lancaster University as the next step for your future.

Lancaster is a global university with an international reputation for combining world-leading research with a personal educational experience. Our reputation is reflected in our top 15 rankings in three UK league tables and top 150 in global league tables.

However, league tables can't tell you everything about a university. Lancaster consistently performs well in the National Student Survey (NSS) – students' opportunity to give their honest feedback on their studies. Our excellent 2022 NSS results are testament to the dedication of the University's teaching and support staff for their incredible work to maintain the high standards of which we are so proud.

We attract the brightest minds from around the world to work and study at Lancaster. You will learn in a stimulating, research-led environment, from academics who are at the forefront of their field of research. 91% of Lancaster's research was independently rated as 'internationally excellent' or 'world-leading' in the 2021 Research Excellence Framework.

Lancaster's academics are experts in their disciplines and their research has impact well beyond academia – improving lives and communities, whilst influencing business and addressing the greatest global challenges of our time. In 2020, the University declared a climate emergency and has ambitious plans to become carbon neutral by 2035.

By studying with us, we invite you to become part of our global academic community and continue your journey towards a rewarding future.



**Professor Andy Schofield**  
Vice-Chancellor

## Top 15 in the UK

The Complete  
University Guide  
2023

The Guardian  
University Guide  
2023

The Times and  
Sunday Times  
Good University  
Guide 2023



# Lancaster University highlights

## Graduate success

Our programmes are designed to equip and prepare you for the next stages after graduation, whether that is in industry or continued academic development. Some of our courses have been co-designed with industry, and many involve projects and research conducted for organisations, and feature guest lectures and workshops.

Lancaster University is one of the top 25 most targeted universities by the UK's top graduate employers according to The Graduate Market in 2023 report. The UK Graduate Careers Survey, conducted by High Fliers Research in association with The Times, is the largest and most authoritative annual survey of its kind.

## The Lancaster experience

At the heart of the Lancaster experience is our thriving community of students, staff, alumni and international partners. We are proud to be one of a handful of UK universities to have a collegiate system, meaning whether you choose to study on campus or by distance-learning, you will be part of a supportive and friendly college community.

## A global community

Over 5,000 international students from more than 100 countries choose to study with us. Lancaster is diverse and rich with culture, providing lots of opportunities for our students to benefit from international insights and global perspectives. Our global community extends beyond the UK through our vast alumni network and partnerships around the world.

## Global recognition

The **QS Stars** is a prestigious global university rating system used by hundreds of institutions around the world. We've been rated 5 Stars overall and in all categories of the assessment.



Environmental Impact



Employability



Internationalisation



Facilities



Teaching



Research



## Top 150 in the world

QS World University Rankings 2024

Times Higher Education World  
University Rankings 2023



# Discover your new home

**Located on a beautiful 560-acre parkland campus in north-west England, Lancaster University provides the perfect space for high-quality teaching and pioneering research.**

Lancaster brings together the 'best of both worlds' as it's located in an idyllic part of the country close to the Lake District and the stunning north-west coastline, and has excellent road and rail links to cities such as Manchester and Liverpool and is just a train ride away from London and Edinburgh. It is the perfect base to explore the very best of the UK.

## Life in the UK

The UK is among the most visited places in the world. There's lots to experience, from the iconic cities of London and Edinburgh to the dramatic rural landscapes that have inspired poets. The UK is a friendly and welcoming place, with a rich and exciting history, and is made up of culturally diverse communities.

Much of the UK remains green countryside, with major cities being busy, exciting hubs of activity. This means you can experience everything from lakeside walks and mountain hikes, to shopping in large retail destinations and socialising in energetic cities. The UK has a public healthcare system and lots of public transport networks. The weather is varied from snowy winters to warm summers, and you can enjoy food from all over the world. The UK is a place where anyone can feel welcome.

## Everything on campus

The campus has everything you would expect from a top university, including a state-of-the-art library, modern learning spaces, specialist laboratories and workshops, and a variety of study spaces for group or individual work.

But more than that, it's like a bustling town. You'll find everything from cafés, bars and restaurants to art galleries, theatres and a student-run cinema. There are a range of services, from a general medical practice and sports facilities, to laundrettes and convenience shops, all of which are surrounded by green space, parkland and stunning landscapes of mountains, forests, hills and coastline. Follow us on Instagram to learn more.

@lancasteruni

@lancsunicampuslife



For more information, please visit [lancaster.ac.uk](http://lancaster.ac.uk)



SCAN ME





# Our campus

North Campus

South Campus



Health Innovation Campus



South-West Campus

# Explore the neighbourhood

**This is a region that rises from a stunning coastline up to dramatic mountains. It's criss-crossed by canals and the River Lune and dotted with towns and villages full of character and heritage. At the heart of it all, you'll find Lancaster.**

It's a place where history is written into the city streets. Take a walk from Queen's Priory, around Lancaster Castle, past the fine Georgian architecture and through Williamson Park up to the Ashton Memorial; it's a journey through time, from the medieval age to today.

The past is fascinating, but there's an exciting future here too – with innovative industry, dynamic start-ups and free thinkers all producing something new, every day. Here, there's room for free spirits and creative thinkers. The bookish, the outgoing, the trendsetters. With an eclectic range of busy bars, laid-back coffee houses and independent shops, there's a place for them all.

And, always in the background, there's the spectacular coastline of Morecambe Bay, the open countryside of North Yorkshire, and the mountains of the Lake District. Lancaster has so much to offer, we're sure there's something for everyone.

Find out more about Lancaster's story at [lancaster.uk.com](http://lancaster.uk.com).



SCAN ME



## If you're a food lover

Whether you fancy a poke bowl, a conveyor belt serving of sushi or even a spicy curry, you'll find that Lancaster offers a range of international cuisines to suit most tastes. If, however you want to try some more traditional food you could have a Sunday roast or even a classic English fry-up for breakfast. You can also find wholefood cooperatives, food stalls, traditional bakeries and Atkinsons Coffee Roasters who have been roasting coffee beans for more than 180 years.

## If you're a socialite

So much of your university experience is about spending time with friends. Lancaster makes this easy for you with our many cafés and college bars on campus. You will find more places to socialise in the city centre, where you can discover a mixture of cafés, bars and clubs. If you fancy a bigger city then Manchester, Liverpool and Glasgow are easy to reach by train.



## If you're an explorer

Lancaster is surrounded by beautiful countryside and the Lake District, a UNESCO world heritage site, is close by. You'll find many beauty spots to explore, including the Forest of Bowland, which is an official Area of Outstanding Natural Beauty, and the rugged coastline of Warton, Grange-over-Sands and Silverdale. If you want to venture further afield, then you can travel up to the Cumbrian countryside, to the Pennines, or the Scottish Highlands.

## If you're a culture lover

As well as everything that you'd expect to find in a city centre, you'll also discover a scene that is less mainstream. Independent shops and a street market offer the shopper an alternative to the more well-known high street stores. Film, theatre, literature and art can be found at Lancaster's larger venues like the Storey, the Dukes and Lancaster Arts, but you can also find smaller exhibitions and performances in Lancaster's many pubs, cafés and outdoor spaces.



# Sustainability

You. Us. We all play our part.

**We all know that we can do more to protect our planet. It's our responsibility to ensure that the actions we take now protect and preserve our environment and precious resources for future generations.**

At Lancaster, we are committed to sustainability and making a positive and impactful change, which is why we declared a climate emergency in 2020 with the aim to be carbon neutral for electricity and heating by 2030 and net zero from all other emissions by 2035.

We are one of the highest producers of renewable energy according to the Higher Education Statistics Agency and have reduced our electricity and heating emissions by 50% since 2005.

We have been awarded a Gold rating for Environmental Impact as part of the QS World University Rankings 2022. Additionally, we have been rated five stars for this category in the QS Stars rating system for our work and research in the area of sustainability.



For more information, please visit [lancaster.ac.uk](http://lancaster.ac.uk)

## Just a few of our projects...

### Carbon emissions

From better buildings to efficient energy production, we are employing low carbon technology to reduce drastically our carbon footprint in order to create a sustainable place to live, work and study.

### Energy

Our biomass boiler burns locally sourced wood chips to generate heat and supplies around 15% of the total heat demand on campus.

Generating 4000–5000 MWh of electricity annually, our wind turbine produces approximately 15% of the University's electricity consumption each year. The turbine produces enough electricity to power 1,200 homes for a year.

The combined heat and power engine (CHP) is a gas-fired engine located in our Energy Centre that produces heat and electricity. It produces between 25–40% of the University's electricity consumption annually and provides heat to the University district heating system, which supplies heat to offices, lecture theatres and student residences across two thirds of campus.

### Travel

Our travel plan encourages and facilitates staff and students to use sustainable travel modes including buses, cycling, walking and car sharing. Since the introduction of the plan in 2005, carbon emissions from student and staff commuting have reduced by over 40% due to changes in travel mode and improved reduced vehicle emissions.

### Biodiversity

Our campus sits within a parkland landscape covering 560 acres and has more than 25,000 trees and 6.5 miles of hedgerows. The campus contains a diverse mix of habitats including woodland, grasslands, and waterbodies. We have a 2.6 mile woodland trail around campus for you to spend time in nature alongside your studies.

### Sustainable food and drink

We're committed to improving the availability and range of plant-based food options offered across campus. Our recently updated Pendle Brew bar is now 100% vegetarian and vegan, and HIVE café has many vegan and low-sugar options. There are also free water fountains all over campus, so you don't need to buy bottled water.

### Green Lancaster

This is a partnership between the Students' Union and the University's Facilities Division to provide education and engagement experiences for the sustainable development era. Alongside our own sustainability projects, campaigns and events, we support our student societies by providing space and resource at the ECOHub for students to hold community engagement activities independently or in partnership with us. We work with over 50 local, national and international organisations to run events, support campaigns and raise awareness of our core areas while also working towards the strategic ambitions of the University.





# More than learning

## For our undergraduates

### Flexible study

For many degrees, we offer a flexible approach to your studies that you won't find at many other highly ranked universities.

This means that you may have options to study an additional subject from the very start – whether it's a subject within your major degree programme, or in another area altogether. Some of these options have entry requirements, while others don't. However, some degree subjects, such as medicine, physics, law and engineering, don't have options in the first year. This is due to the nature of these degrees and the breadth of the material that needs to be covered or is prescribed by professional bodies. Please visit our website to see if the course you're interested in allows you to study additional options in your first year.

Studying additional options, if you have the opportunity, will offer you the chance to explore an area that interests you, whether it is something you enjoyed at school or something completely new. These options can enrich your studies and help you to appreciate your degree in a wider context. This breadth is also appealing to future employers.

It's worth thinking about your choices now, but you don't have to commit until just before your course starts.

### Independent learning

Studying for a degree at Lancaster is more than just gaining a deeper knowledge of your subject. We also focus on helping you develop the skills required to succeed in the workplace or further study, such as leadership and teamwork.

Independent study is a key component of your learning and designed to challenge and inspire you. This might feel different at first, but you won't be left on your own, as there is a range of help available to support you in becoming an independent and effective learner able to analyse and critically evaluate information – skills highly valued by employers.

### Innovation and entrepreneurial learning

The University's Work in Progress team provides students with a wealth of practical opportunities to equip them with the creative and collaborative problem-solving capabilities, commercial awareness, and personal resilience that employers value so highly in our graduates.

The team is here to ensure that students' ideas for sustainable innovation projects, start-up businesses and social enterprises are listened to and supported through access to funding, co-working space, specialist advice and a vibrant peer community. The team also oversees the Start-up Visa scheme, opening up new opportunities for employment in the UK after graduation.

For more information, please visit [lancaster.ac.uk/work-in-progress](https://lancaster.ac.uk/work-in-progress).

### Placement year

Our degrees with a placement year provide the option for you to spend the third year of your four-year course working in a paid graduate-level role. This valuable opportunity will help you to apply the skills you have developed in your first and second year of study, refine your career plans and make a fantastic addition to your CV, significantly boosting your prospects for graduate employment.

Finding and securing a placement opportunity is down to you, just as it would be when applying for a graduate vacancy. However, we will provide you with plenty of support and guidance in sourcing placements, writing applications, preparing for, and practising, every stage of the recruitment process including interviews and assessment centres.

If you change your mind about undertaking a placement year, or are unable to secure a role, you will be able to transfer to the non-placement variant of your degree and continue with your studies at Lancaster, completing your degree after your third year.

### Study abroad

As a Lancaster student, you may have the opportunity to study abroad as part of your degree. We have partner universities in Europe, the USA, Canada, Mexico, Australia, New Zealand, and Asia offering opportunities to immerse yourself in another culture. You will choose from a shortlist of partners, which are compatible with your degree. While some degrees have study abroad built in (those with Study Abroad in their title), you can apply to study abroad on many of our degrees after you have started at Lancaster.



For more information, please visit [lancaster.ac.uk](https://lancaster.ac.uk)



## For our postgraduates

### Creative and critical thinkers

We offer a wide range of both taught and research degrees designed to broaden your experiences. A postgraduate degree from Lancaster can propel you towards a new or advanced career, or help you progress into research.

By joining us as a postgraduate student, you'll have access to resources and space in which you can learn and grow. You'll study alongside our innovative academics through research-led teaching, develop your career potential, and be surrounded by a ready-made, global community.

### Taught degrees

Our taught postgraduate degrees normally involve a combination of taught modules, coursework and a major project or dissertation. While most taught programmes enable you to build upon your undergraduate studies, some academic programmes are open to students with little or no prior academic experience in the subject.

### Research degrees

Our postgraduate research students are an important part of our research community and make up a substantial part of our student population. We have a range of research options at Lancaster including:

- **Doctor of Philosophy (PhD)**

Taking between three to four years to complete, most doctoral students at Lancaster work on a traditional PhD by research. This includes research training and an emphasis on conducting original research. This will be compiled either in a written thesis or through alternative formats, for example a series of publications, or a performance or art installation accompanied by a smaller thesis.

- **Professional Doctorates**

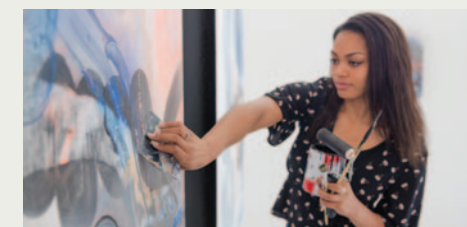
We offer two types of professional doctorates: Doctor of Medicine (MD), taking two years to complete and the Doctor of Clinical Psychology, which takes three years to complete.

- **MSc by Research**

A master's by research differs from a traditional taught degree as it offers the opportunity to carry out an in-depth research project. It is designed to prepare students for doctoral or PhD research and allows students to develop a programme that is based on their own academic interests.

- **Integrated degrees (1+3)**

Several of our courses offer students the option to take a bridging approach to postgraduate study. Known as integrated degrees, or 1+3, they can be followed at master's level before progressing directly to PhD level. Although there is a taught component to these courses, they are ideal for anyone who already has a clear idea of the field they would like to research and they are assessed primarily by dissertation.





## From Pakistan

I think the best way to describe Lancaster University would be "all in one". The teaching standard is up to the mark, you get free or cheap access to a wide range of academic and non-academic facilities, an intensive career support programme and a well-maintained campus with the coast, city and countryside nearby. It has everything a student could ask for.

Lancaster has become my favourite city in the UK! I go on daily walks to explore nearby places and the lush countryside. My adventures usually start from the campus, and take me all the way to Williamson Park, passing by a bunch of reservoirs and waterways which are always a lovely sight. Sometimes I take a bus to Morecambe beach or just sit in the café located within the walls of Lancaster Castle to admire its beautiful architecture.

My course is very well structured, has an up-to-date curriculum and the lecturers are highly qualified with flexible office hours to make sure every student gets attention. Modules focus on real life implications and teach academic as well as non-academic skills that go beyond the scope of the course.

# Aleena Shaheryar



# Ranel Miranda



## From India

I chose the UK for my studies as the universities here are known for their academic excellence and quality. The UK is also a very prominent nation for its culture, literature, art, history and music among other things.

Lancaster University campus is like a town of its own, with various facilities for students and staff such as restaurants, a pharmacy, post office and much more. It ensures that students feel at home while they study at Lancaster University. My favourite place is the library with its amazing facilities; there are individual study pods and group study spaces.

My programme has been really challenging and interesting; it makes you think critically with every step you take. The department and the faculty make every effort to ensure modules are interesting for students. What excites me the most is the practical outlook to the course; it has collaborations with industry experts and entrepreneurs which really bring value to the academic context of the course.





# Jamie Tay

## Jia Hui

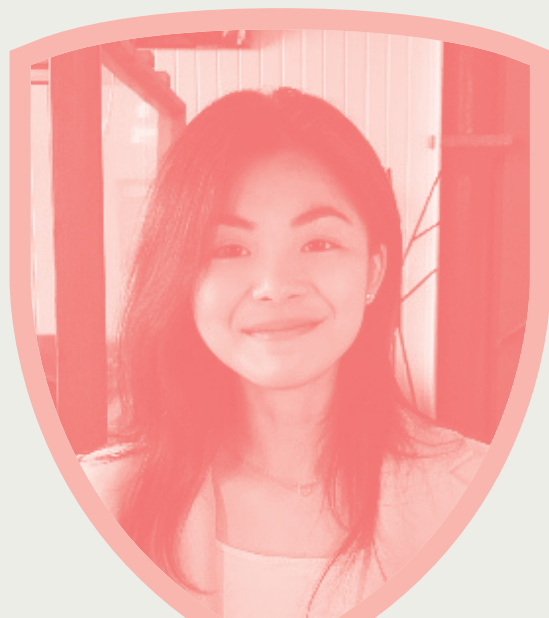


### From Malaysia

I would personally say that Lancaster University is the ideal overseas student experience that I had been looking forward to. It offers an extensive range of modules for students to choose from, which I really appreciate as each module is specialised and detailed.

My flatmates and my volleyball friends are kind and helpful to me - we got along with one another straight away! Being part of a volleyball team allowed me to get to know and interact with many other international students. Being a gym freak myself, I absolutely adore the on-campus sports centre. With three different gym rooms and the brand new multi-purpose court, I would say that the sports centre may easily be my favourite place on campus.

But I really love the campus in general, especially in the morning as I would often take morning walks while admiring the picturesque scenery, it is a nice mental break from studying.



### From Egypt

Lancaster being a collegiate, green and self-contained campus-based university was a plus for me. When I started my journey at Lancaster I was a bit nervous as it was my first time in the UK. But I actually found that the historic city and the campus were nice and the people were friendly. This helped me a lot to settle in and fully immerse myself in the local community quicker than I first anticipated. Being part of a college on campus is really nice and useful as it makes me feel at home with lots of activities and events going on throughout the year, so I never feel socially isolated.

What I like best about my course is that it helped me to develop lots of beneficial skills. Working with academics that are experts in their fields contributed largely to my knowledge and my research skills. This also opened doors for me to attend prestigious conferences in my field held in other universities in the UK, which is very useful for networking.



# Taher Mohamed

## Ali Mahmoud

## Radwan

# A world of opportunity

**Studying at Lancaster is all about broadening your horizons, finding new perspectives, and discovering new experiences. At Lancaster, you get to be part of a community that starts with your college and stretches beyond the campus and right round the world.**

You'll have opportunities to make international connections of your own, living and studying with students from more than 100 countries. You could be doing group work, getting involved with one of the student societies or enjoying a night off at a large or small social event. You'll learn from world-leading staff from around the globe who are working on ground-breaking research, which is recognised internationally.

We offer a range of opportunities for you to develop as a global citizen, from overseas travel and global networking to cultural competency training and international student societies. These are great ways to broaden your cultural understanding, gain new skills and enhance your employability.

## Study abroad

As an undergraduate, you might spend time studying abroad as part of your course at one of our partner universities around the world or undertake a work placement abroad. We have over 120 approved partners worldwide.

Some postgraduate degrees may offer field trips or overseas visits. Opportunities for studying abroad at postgraduate level vary widely across departments. If you are considering studying abroad during your postgraduate degree, please discuss your options with your department.

## Vacation travel and summer schools

We also have an increasing number of vacation opportunities where you can spend time at one of our overseas campuses or partners with fellow Lancaster students and staff. Recent destinations have included Malaysia, China, India, Ghana, Germany and the USA, as well as degree specific field trips in Italy, Iceland, Switzerland and New York.

## Travel funds

We offer a variety of funding opportunities to support your travel ambitions, such as the Lancaster Global Travel Fund. Currently, we also have access to grants from the Turing Scheme, the UK government's official funding programme for students to carry out international study, work or volunteering.

## On-campus experiences

There are many ways to develop as a global citizen without traveling outside the UK. Alongside the diverse community of staff and students you will meet on campus, we also offer language courses, cross-cultural competency training and digital conferences that connect you with students around the world. Lancaster is also home to many international student societies and cultural groups, and we host an annual research conference for our undergraduate students based in the UK and at our overseas partner campuses.

[lancaster.ac.uk/global-experiences](https://lancaster.ac.uk/global-experiences).



**Top 50**  
in the world for  
international  
outlook

Times Higher  
Education World  
University  
Rankings 2023



# International partnerships and campuses

Alongside our many research collaborations and study abroad partners, we also have four strategic partnerships and campuses overseas.

These partnerships are part of our international community, providing you with exciting opportunities to make connections and travel around the world. They enrich your student experience by bringing a range of viewpoints and creating tangible ways to develop as global citizens, from summer schools and exchange years to our global classroom initiative and our undergraduate research conference.

[lancaster.ac.uk/study/partners](http://lancaster.ac.uk/study/partners)



China



China

For more information, please visit [lancaster.ac.uk](http://lancaster.ac.uk)

## China

In partnership with Beijing Jiaotong University, we have a joint institution in Weihai in the Shandong Province of China. Degrees are jointly issued and certified by the two universities, meaning graduates receive a joint transcript.

## Germany

Based in Leipzig, our Germany campus offers Lancaster University undergraduate and postgraduate degrees. This campus provides a fantastic opportunity to get a degree from a leading UK institution while studying in mainland Europe.

## Ghana

Our Africa partnership campus was the first British campus opened in Ghana and is approved by the Ghana Tertiary Education Commission (GTEC). Students can study a range of subjects to gain a Lancaster University degree.

## Malaysia

Established over 15 years ago, our partnership with Sunway University offers a range of dual degrees in Malaysia. We have over 6,000 students enrolled on these courses and graduates receive a degree certificate from each university.



Germany



Germany



Germany

## Pathways to Lancaster

In collaboration with selected partner universities around the world, we offer a number of undergraduate and postgraduate transfer programmes in a variety of subject areas. These access and articulation programmes allow students to spend one or two years of study in one country followed by a period of study at Lancaster, leading to a single- or double-degree award.

For further information about these programmes, please visit [lancaster.ac.uk/transfer-programmes](http://lancaster.ac.uk/transfer-programmes).



Ghana



Malaysia



Malaysia

# Brightest minds

At Lancaster we pride ourselves on the quality of our teaching and student experience. Our international reputation for academic excellence means that we attract the brightest minds from around the world to work and study at Lancaster. You will learn in a stimulating, research-led environment, from academics who are at the forefront of their field of research.

## Computing emissions might be worse than previously thought

Global computing could be responsible for a greater share of greenhouse gas emissions than previously thought and these emissions will continue to rise significantly unless action is taken, a new study highlights.

Dr Kelly Widdicks, with colleagues from Lancaster's School of Computing and Communications along with sustainability consultancy, Small World Consulting Ltd, claim that previous calculations of ICT's share of global greenhouse emissions, estimated at 1.8-2.8%, is likely to fall short of the sector's real climate impact as they only show a partial picture.

The researchers point out that some of these prior estimates do not account for the full life-cycle and supply chain of ICT products and infrastructure such as: the energy expended in manufacturing the products and equipment; the carbon cost associated with all of their components and the operational carbon footprint of the companies behind them; the energy consumed when using the equipment; and also, their disposal after they have fulfilled their purpose.

The researchers argue ICT's true proportion of global greenhouse gas emissions could be around 2.1-3.9%, which is greater than the 2% of global emissions created by the aviation industry. In addition, the research warns that new trends



**Dr Kelly Widdicks**  
Lecturer in Computer Science

in computing and ICT such as big data and AI, the Internet of Things, as well as blockchain and cryptocurrencies, risk driving further substantial growth in ICT's greenhouse gas footprint.

In order to meet net zero targets by 2050 the research team outlined key issues to address the future of digital technology's emissions. For example, how increased efficiency driven by digital technology – often considered as a way to reduce emissions in other sectors – could in fact lead to further growth via rebound effects. Emissions from the digital sector and worldwide have grown continuously despite efficiency increases, meaning new ways of addressing digital technology's role in the climate crisis are needed.

The researchers recognise that several of the world's technology giants have made statements on reducing their climate footprint, however they argue that many of these pledges are not ambitious enough and industry self-regulation may not be sufficient to bring about the emissions reductions needed to reach net-zero by 2050.

For more information, please visit [lancaster.ac.uk](http://lancaster.ac.uk)



**Jessica Davies**  
Professor of Sustainability



**Mark Stevenson**  
Professor of Operations  
Management

## The barriers to replacing fast fashion with homegrown clothes

Many of the clothes people buy on the high street can be traced back to a field, with around 40% of the fibres used in the fashion industry globally coming from plants or animals. Most of this activity takes place abroad, but textiles were once big business in the UK. Given that the fashion industry is responsible for around 8-10% of global carbon emissions and nearly 20% of wastewater, reviving this industry could provide a route to a more sustainable, 'homegrown' UK textile industry.

Lancaster University researchers, Professor Jess Davies (Lancaster Environment Centre) and Professor Mark Stevenson (Lancaster University Management School) along with master's by research student Helena Pribyl have worked with the community-based initiative 'Homegrown/ Homespun' to identify the benefits and challenges to reviving the UK textile industry.

Introducing a regenerative approach to growing clothing fibres in the UK could help to reduce emissions from farming by up to 25%. Regenerative farming techniques, like the use of organic manures and reduced tillage, not only reduce the greenhouse gas emissions from fertilisers, pesticides, and machinery but also help to hold carbon in soils.

Manufacturing locally has the advantage of greater transparency allowing the individual stages of the supply chain to be more observable and therefore less prone to unethical practices. Producing textiles locally could also help to reconnect people with lost skills, crafts and culture. Further, it could contribute to sustainability awareness and help change lifestyle and consumption habits, especially when fields are located within local communities. For rural economies, a renewed textile industry would bring job opportunities and potentially contribute to the UK's levelling up agenda.

However, the research also identified some barriers that would need to be overcome first. Space in the UK for cultivation is limited and we need to be sure that finding land for the cultivation of clothing fibres doesn't come at the expense of national food production. The skills needed will take time to develop, and economies of scale will be hard to achieve. Finally, UK-grown and made clothes will inevitably be more expensive and may remain a niche product unless the public buys into the idea.



# Support and wellbeing

**Sometimes life can be overwhelming, and that's no different at university. If you're experiencing something that's affecting your studies or wellbeing, we are here to help.**

You'll hear us talk about our colleges a lot. A ready-made community, colleges are what most Lancaster students come to think of as 'home'. When you're settling in, you'll be introduced to your college advisor teams. Their job is to provide welfare support, guidance, and advice. Think of them as a friendly face you can rely on, someone to talk to about homesickness, relationships, academic issues, or anything related to university life.

Whether it's learning how to work the washing machine, or how to write a literature review, university is all about learning new things. The same can be said for mental health and wellbeing. Some of our services focus on giving you the tools and developing skills to manage mental health. Our services, Silvercloud and The Wednesday Thing, offer practical guidance in different ways but both cover common issues faced by students like building a healthy routine, procrastination, managing anxiety and stress. Silvercloud offers modules you can work through, and The Wednesday Thing hosts regular practical sessions led by your college wellbeing officers. You can access groups and workshops on specific issues like grief, personal empowerment, and general anxiety. Our 'any or no faith' chaplaincy is another great resource offering spaces for community, mindfulness, and prayer.

Our mental health service team consists of qualified and professional mental health practitioners and administrators, who are University members of staff. This includes counsellors, psychological therapists, and mental health advisers. There are options to talk to our team at one-off appointments if you need to work through a problem or ask about support and we offer a 24/7 helpline operated through our external partner, so you can contact us for help and advice at any time, wherever you are. If you find yourself in need of more significant mental health support, you can self-refer to access our specialist services. From there we'll guide you through what we can do, talk about the most appropriate form of help, and in some cases, we may refer you on for further help and support, like the NHS.

Our Disability and Inclusion Service supports disabled students or students with a health condition; if you have a disability or health condition, please let us know as soon as possible so that we can get the right support in place.

## Visa and immigration

We have an expert visa and immigration team on hand to support you with your application to study in the UK. They're also on hand throughout your time at Lancaster if you need any help or advice with changes to your visa, arranging for visitors, preparing for graduation, or information about your post-study work options.

[lancaster.ac.uk/visa-support](https://www.lancaster.ac.uk/visa-support)

## Pre-departure

Our students receive a warm and exciting welcome when they arrive at Lancaster. But we're here to help even before you set off. Our dedicated international team host pre-departure events to help students prepare for travel to the UK and we have information and guidance available online.



# Students' Union, societies and sports

Lancaster University Students' Union is here to enhance every aspect of your time as a student – supporting your social life, studies, sporting activities, hobbies, interests, and the causes you care about.



For more information, please visit [lancaster.ac.uk](http://lancaster.ac.uk)



## Your Students' Union

Elected officers represent students, from academic matters to welfare issues. That includes the colleges – when you join one of our eight undergraduate colleges, you'll get the chance to elect your Junior Common Room (JCR) executives. These college teams are part of the Students' Union and a crucial part of the Lancaster experience.

The Union builds a sense of community on campus by hosting a full calendar of events – including sports competitions and Lancaster's legendary 'Extrav' celebrations at the end of the year.

If you're interested in volunteering, the Union offers a range of amazing opportunities to get involved in. You can be a part of the Green Lancaster sustainability project or get teaching experience with their Children's and Young People Partnership. From one-off projects to long-term placements, they offer a variety of great volunteer opportunities.

They are here to fight in your corner by offering support throughout your time at Lancaster. Their Advice team is here to help, offering support to help you through whatever life throws at you. Their Advice service is a free, non-judgemental, and confidential support service.

When you come to study at Lancaster, you'll automatically become a member of the Students' Union – so you'll have access to all the services and support on offer. However, if you do not wish to join, you also have the right to opt out of this membership; the choice is yours.



## Societies

The Students' Union supports over 200 societies, including many international, cultural and faith groups that are here to welcome you from the day you arrive. Whether you want to find like-minded students or help create a community on campus, these groups are a fantastic opportunity to meet new people, have fun, and develop skills to benefit your future. There are even free taster events every term, so you can try a group or society without committing to joining long term.

## Sports

We have a wide range of sports clubs and fantastic sporting facilities to help you to stay active. There is something for everyone, whether you are highly competitive or just want to have fun.

On our campus you'll find extensive sports facilities including a 25-metre swimming pool, a fully equipped fitness suite, and an 8.5-metre climbing wall and bouldering cave specially designed with input from the renowned mountaineer Sir Chris Bonington.

If you prefer to take your exercise outdoors, our 560-acre campus has plenty of space for sport and recreational activities. We have all the usual facilities such as tennis courts and sports pitches as well as a 2.6-mile trim trail.

Our teams compete in British Universities and Colleges Sports (BUCS) competitions and there are lots of inter-college sports events throughout the year. One highlight of the year is the Roses competition, a varsity tournament where Lancaster University goes against its sports rivals York University.



# Nine colleges, one home

**Our colleges are central to the Lancaster University experience.**

When you arrive, university can seem a little like a buzzing town where everyone else knows where they're going. It can take a while to get your bearings, but your college is there from day one.

We have nine colleges, eight for undergraduates and one dedicated postgraduate college. Choosing your college usually comes down to the type of place you want to live in. However, it's more than just a place to stay, you'll have the chance to study and socialise there as well. So, when you've finished your work for the day, you can meet your friends in the social space, settle down to a film or even see a band play. If you can find the time in your schedule, your college's events and activities can fill it.

And, even if you decide to live in town, you can always come to campus to join in – your college is yours wherever you're staying.

Your university experience is as much about the people as it is where you'll live or socialise. Your college becomes your team, your university family. It might take a little time to get to know the others on your course or to figure out which clubs to join, but your college is a ready-made set of friends. You live together, study together and compete together – in everything from sports to debates to business. And because these are the people you get to know first, they're often the friendships that last the longest.

During your time at Lancaster, your college offers the first port of call for any support. There are staff on duty round the clock, ready to help – whether it's a friendly word of advice, or something more serious. All of this makes a huge difference. For 'collegiate', you can read 'supportive', 'friendly', 'fun' and 'open'. You start with your college on day one, and you graduate with your college when you finish.

[lancaster.ac.uk/colleges-and-community](http://lancaster.ac.uk/colleges-and-community).



Bowland College



Cartmel College



County College



Furness College



Fylde College



Graduate College



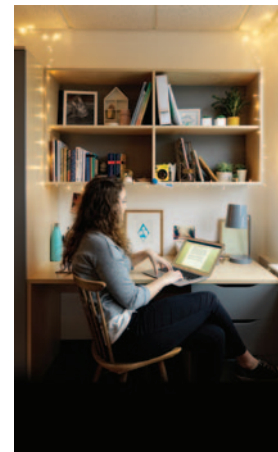
Grizedale College



Lonsdale College



Pendle College



## Award-winning accommodation

At Lancaster, we offer a wide range of undergraduate accommodation to suit different tastes and budgets. Our accommodation has been named Best University Halls eight times since 2010 at the Global Student Living Index, previously The National Student Housing Awards.

Most new undergraduate students choose to live on campus in their first year and find our collegiate setup the perfect way to make friends and settle in. There are eight undergraduate colleges to choose from, breaking down the university population into smaller communities, and all accommodation is located within these colleges.

Two thirds of our accommodation have private bathroom/shower facilities, but we also offer accommodation where you'll share toilet and shower facilities with other students. Most of our accommodation is self-catered, but a catered package is available in some of the colleges if you want to spend less time cooking and more time on other things.

## Lancaster University Homes

If you prefer to live in the city, then Lancaster University Homes can help you to find suitable student housing. With a comprehensive list of approved city-centre houses, flats and halls, you can be safe in the knowledge that we have inspected all properties included in the scheme to ensure that they meet ours and the UK government's standards.



The cost of your accommodation will depend on the type of room you choose.

For the 23/24 academic year, prices range from £129.71 to £177.59 per week depending on the room you choose.

For more information about our accommodation options and guarantee, please visit [lancaster.ac.uk/accommodation](http://lancaster.ac.uk/accommodation).

# Career focused

We know that it can be daunting to start thinking about your future. So, our team of friendly and experienced careers professionals are here to give you the support and help you need to plan your next steps.

We understand the vast array of options you face. We'll help you to choose what's right for you, whether that's applying for a graduate job, continuing your studies to a higher level, or both.

There are careers events to welcome you as soon as you're unpacked and settled. We have student and graduate recruiters engaging with us all year round who are happy to tell you about their opportunities – which might be part-time work while you're a student, an industry placement, or a job when you graduate. Come and find out about our Career Mentoring Programme where you can be matched with a mentor who will help you manage your career, and our Employment and Recruitment Service for part-time work while you study.

Our online resource offers 24/7 careers help. These include the professional development tool, the award-winning Career Edge +, which can help you understand what you have to offer in terms of skills, knowledge and expertise when meeting a wide variety of global employers. Developed by one of our very own academics, this is a world renowned and recognised career development tool that helps you to identify key areas for professional development.

## Specialist international careers support

Working closely with our alumni and employers we deliver international events, sharing the latest labour market knowledge, getting key industry insights, and helping you to develop a strong network for your future career, wherever that may be. We also offer our students access to specialist resources to help them find a career in the UK and overseas, and bespoke employment programmes are also available to our international students to support their career planning.

We also have international career experts on hand, bringing employers who value the calibre of graduate at Lancaster to the University, virtually as well as face to face to ensure you have a competitive edge. Through the Careers Service you have opportunities to attend local and national events on campus and virtually, meeting recruiters and recent alumni to learn about graduate employability, the skills employers need and advice on how to access graduate roles.

## Starting a Business

Some students and graduates set up their own business, social enterprise or freelance service, and our centre for innovation and entrepreneurial learning, Work in Progress, offers a wealth of expertise, support, and contacts to help you turn your ideas into reality.

## Volunteering

Volunteering is a great way to develop skills, enhance your CV and make a positive contribution to the community. Lancaster has a thriving volunteering programme for you to get involved with. Our Students' Union also works with a number of charities, schools and local organisations to arrange a variety of volunteering opportunities for students to participate in.

## The Lancaster Award

To help you stand out from the crowd and enhance your future employment prospects you can complete the Lancaster Award. Developed in partnership with employers, it is formal recognition of all the activities you undertake during your studies that enhance your employability.

## Post-study work visa

The UK offers an attractive post-study work visa for those that successfully complete a bachelors or postgraduate qualification in the UK. The Graduate Route allows you to work or look for work for up to two years, and can facilitate the move into other work routes that potentially lead to settlement.

There are also other visa options open to many international students after they graduate. These include the Skilled Worker visa and the Start-up Route and Innovator visa.

## Life-long support

You probably won't need us after you graduate – most of our students go straight into work or continue their studies. Some graduates set up their own business. But careers aren't always straight lines on one simple track. Your aims in life can shift over time and your circumstances may change. When that happens, we'll be here to help. We currently provide our graduates with free lifetime access to our Careers and Employability Service. Put simply, we're here for as long as you need us.



# A global network for life

**As a Lancaster student and graduate, you will join a global graduate community. We have over 150,000 alumni in around 180 countries and over 50 alumni groups around the world.**

From the beginning of your time as a Lancaster student, you will have the opportunity to connect with alumni, and you can continue to access this network after you graduate.

We have a team of dedicated alumni volunteers, and you'll find alumni activities in over 40 cities worldwide including Athens, Beijing, Dusseldorf, Guangzhou, Hong Kong, London, Seoul, Shanghai and Taipei.

Our groups, events and online communities provide a way for you to develop your professional and social networks, and to keep you connected with fellow graduates wherever you are in the world.

The 'Lancaster for Life' alumni programme will give you access to a wide range of benefits including:

- An Alumni Loyalty Scholarship for taught master's programmes\*
- Free online journal access at the University Library
- A wide programme of alumni events across the world: professional networking, reunions, lectures, and socials
- Dedicated alumni LinkedIn and Facebook networks
- Quarterly newsletters and an annual online alumni magazine, STEPS

For further details visit [lancaster.ac.uk/alumni](https://lancaster.ac.uk/alumni).

\*Subject to meeting the requirements.

### Why choose Lancaster?

Lancaster University offered a Business Analytics programme with a placement year, which other universities don't offer. The Management School is highly regarded in the UK and the college system creates a home away from home for international students.

The opportunity to study and work with students and staff from different backgrounds is also a benefit. The diverse culture and friendly community at Lancaster University is my favourite part. You can meet like-minded people from all over the world.

As I reflect on my time at Lancaster, I would describe it as inspiring and life changing. Lancaster University is for anyone who likes to study and work smart; wants to be inspired and challenged; is excited about incredible opportunities; and wants to have an amazing university experience.

### More than a degree

As part of my undergraduate degree, I conducted a 13-month work placement at a technology company in the UK, which allowed me to apply the theories and methods I learnt in the real world. In addition to the academic aspect, I also improved my communication, networking, and time management skills through a job, which was extremely useful for my final year. This placement experience also gave me confidence to enter the working world. As I really enjoyed my placement year, I decided to search for job opportunities in the UK after I graduated.

One of my highlights at Lancaster was being able to work as a student ambassador for the Lancaster International Exchange Programme and Global Summer Schools during the summer holidays. I worked with other students and staff, welcoming over 250 students from Malaysia, Ghana, China, and Pakistan who spent three weeks at Lancaster. It was an incredible opportunity to meet people from different countries and help them experience Lancaster

life. Even though we're in different countries now, I am still in touch with some of the students I met from the summer schools.

Alongside study, I worked on campus part-time at the Deli café. During my master's degree, I undertook a role as an Assistant Dean for Furness College. All these experiences helped me grow during my time at university and make life-long friends.

### Achieving ambitions

When I first started university, I had no idea what my future career would look like. I didn't have a CV. I didn't know what the interview process was like in the UK. I applied for a few work experience opportunities, but wasn't having much success. I consulted with my personal academic tutor, and he suggested that I could reach out to the Careers team at Lancaster, and the wonderful careers consultants there helped me to create my CV.

During my second year, I started to gain a sense of direction for my career path, but it still wasn't very clear. Luckily, I secured a placement opportunity as a marketing assistant at a technology company. It was an amazing experience for me and a great thing to put on my CV, especially as an international student.

I think it is the course I studied at Lancaster and the work experiences I had that helped me shape my career and ambitions. The Careers team also helped me develop the skills I needed, such as improving my CV, practicing for interviews, and preparing for assessment centres. With the team's help, I managed to secure a graduate job offer with NatWest Group before I completed my master's degree.

As an alumnus, I volunteer and organise events for alumni gatherings in London. There are many alumni groups all over the world, so it is easy if you want to connect with other graduates even when you're not in Lancaster anymore.

# Jiaxuan Li



**Job:** Senior Strategy and Customer Insights Analyst at NatWest Group.  
**Degree:** BSc Business Analytics (2014-2018) and MSc Marketing (2018-2019)  
**From:** China

# Funding your studies

It is important that you take the time to research and plan your finances. Our student funding advisers are here to offer information on financial support and advice on budgeting whenever you need it.

The cost for attending university can be broken in to two main elements – tuition fees and living expenses.

## Tuition fees

For 2024 entry, the University classifies applicants as either Home or International students.

International fees are dependent on your choice of course. Fees are reviewed annually and are liable to increase. Fees for 2024 entry were not available at the time of printing, but the 2023–24 entry fees may be used as a guide.

[lancaster.ac.uk/international-fees](https://lancaster.ac.uk/international-fees).

## Living expenses

One of your main outgoings will be your living expenses and you should think carefully about what costs you would incur before you start your course. You should consider what type of accommodation you wish to live in, food prices, entertainment and other costs. A simple way to plan for your annual expenditure is to start with your weekly costs, then multiply this by 40 weeks – the number of weeks in the university year (it's less if you can go home during the spring and winter breaks).

The UK Home Office requires all international students studying in the UK to demonstrate that they have enough money to pay for their first year of course fees and living costs. You can find out more about visas and immigration at the government webpages here: [gov.uk/student-visa](https://gov.uk/student-visa).

You can also find helpful information regarding the type of visa that you can apply for depending on your nationality and the length of studies in the UK: [gov.uk/check-uk-visa](https://gov.uk/check-uk-visa).



## Scholarships, bursaries and other funding options

We welcome applications from high-achieving students from all backgrounds. Dependent on your academic ability we have a range of bursaries and scholarships to support students.

### Lancaster University scholarships and bursaries

We will publish information regarding our scholarships for students beginning their studies in the academic year 2024–25 later in 2023.

Many of our scholarships offer support towards fees, although some may also contribute towards living costs. Competition for these scholarships is mainly based around academic performance and the number of scholarships and studentships offered varies from year to year. For more information about the bursaries and scholarships on offer at Lancaster University, please visit [lancaster.ac.uk/scholarships](https://lancaster.ac.uk/scholarships).

### External finance opportunities

Lancaster University students are eligible for a variety of external finance opportunities, such as US federal loans, Sallie-Mae loans, and FINS European loans.

[lancaster.ac.uk/financial-awards](https://lancaster.ac.uk/financial-awards).

### Other funding opportunities

Other sources of funding include Chevening Scholarships, Commonwealth Scholarships, Fulbright Awards and the British Council.



# Our courses

We have nearly 600 undergraduate and postgraduate courses to choose from. Many of our undergraduate courses also offer an option of a four-year study abroad, placement year or industry variant.

We also offer a range of four-week and 10-week English language courses and a range of foundation courses to help you prepare for university-level study. For more information on what is on offer, please visit [lancaster.ac.uk/pre-sessional](http://lancaster.ac.uk/pre-sessional).

For full details about our courses, please visit:

[lancaster.ac.uk/ug-courses](http://lancaster.ac.uk/ug-courses)

[lancaster.ac.uk/pg-courses](http://lancaster.ac.uk/pg-courses)

UNDERGRADUATE	Degree (Hons)	UCAS Code	Typical offer
<b>Accounting and Finance</b>			
Accounting and Finance	BSc	N400	ABB
Accounting and Management	BSc	NN24	ABB
Accounting, Finance and Mathematics	BSc	NG41	AAB
Finance	BSc	N300	ABB
<b>Architecture</b>			
Architecture	BA	K100	AAB
<b>Art and Design</b>			
Design	BA	W281	ABB
Fine Art	BA	W100	ABB
Fine Art and Creative Writing	BA	WW18	ABB
Fine Art and Design	BA	W1W2	ABB
Fine Art and Film	BA	WP13	ABB
Fine Art and Theatre	BA	WW14	ABB
<b>Biochemistry</b>			
Biochemistry	BSc	C700	AAB
Biochemistry	MSci	C706	AAA
<b>Biology</b>			
Biology	BSc	C100	AAB
Biology	MSci	1M66	AAA
Biology with Psychology	BSc	C1C8	AAB
<b>Biomedical Science/Biomedicine</b>			
Biomedical Science	BSc	B990	AAB
Biomedicine	BSc	C701	AAB
Biomedicine	MSci	C703	AAA
<b>Business Analytics</b>			
Business Analytics	BSc	N2N1	ABB
<b>Chemistry</b>			
Chemistry	BSc	F100	ABB
Chemistry	MChem	F101	AAB
<b>Computing, Data Science and Communications</b>			
Computer Science	BSc	G400	AAB
Computer Science (with Industrial Experience)	MSci	G404	AAA
Computer Science and Mathematics	BSc	GG14	AAA
Computer Science and Mathematics	MSci	GG1K	A*AA
Cyber Security	BSc	I900	AAB
Data Science	BSc	G900	AAB
Data Science (with Industrial Experience)	MSci	G903	AAA
Software Engineering	BSc	G602	AAB
Software Engineering (with Industrial Experience)	MSci	G601	AAA

UNDERGRADUATE	Degree (Hons)	UCAS Code	Typical offer
<b>Criminology</b>			
Criminology	BA	M930	ABB
Criminology and French Studies	BA	MR91	ABB
Criminology and Law	BA	MM13	ABB
Criminology and Psychology	BA	CL86	AAB
Criminology and Sociology	BA	LM39	ABB
<b>Drama, Theatre and Performance</b>			
Drama, Theatre and Performance	BA	W440	ABB
Theatre and Chinese Studies	BA	W4T1	ABB
Theatre and Creative Writing	BA	WW48	ABB
Theatre and English Literature	BA	WQ43	AAB
<b>Ecology and Conservation</b>			
Ecology and Conservation	BSc	C180	ABB
Ecology and Conservation (Professional Experience)	MSci	OX48	AAB
<b>Economics</b>			
Business Economics (Industry)	BSc	4V11	ABB
Economics	BA	L110	ABB
Economics	BSc	L100	AAB
Economics and Finance	BSc	NL31	ABB
Economics and Mathematics	BSc	GL11	AAB
Economics, Politics and International Relations	BA	LL22	ABB
<b>Engineering</b>			
Chemical Engineering	BEng	H800	ABB
Chemical Engineering	MEng	H811	AAA
Electronic and Electrical Engineering	BEng	H607	ABB
Electronic and Electrical Engineering	MEng	H606	AAA
Engineering	BEng	H100	ABB
Engineering	MEng	H102	AAA
Mechanical Engineering	BEng	H300	ABB
Mechanical Engineering	MEng	H303	AAA
Mechatronic Engineering	BEng	HH63	ABB
Mechatronic Engineering	MEng	HHH6	AAA
Nuclear Engineering	BEng	H820	ABB
Nuclear Engineering	MEng	H821	AAA
<b>English Language and Linguistics</b>			
English Language	BA	Q304	AAB
English Language and Chinese Studies	BA	TQ13	AAB
English Language and Creative Writing	BA	Q3WV	AAB
English Language and French Studies	BA	QR31	AAB
English Language and German Studies	BA	QR32	AAB
English Language and Linguistics	BA	QQC3	AAB
English Language and Literature	BA	Q302	AAB
English Language and Spanish Studies	BA	QR34	AAB
Linguistics	BA	Q100	AAB
Linguistics and Philosophy	BA	QV15	AAB

## Our courses

UNDERGRADUATE	Degree (Hons)	UCAS Code	Typical offer
<b>English Literature/Creative Writing</b>			
English Literature	BA	Q300	AAB
English Literature and Creative Writing	BA	QW38	AAB
English Literature and History	BA	QV31	AAB
English Literature and Philosophy	BA	QV35	AAB
English Literature and Politics	BA	QL32	AAB
English Literature with Creative Writing	BA	Q3W8	AAB
<b>Environmental and Earth Sciences</b>			
Earth and Environmental Science	BSc	FF68	ABB
Earth and Environmental Science	MSci	4R71	AAB
Environmental Science	BSc	F750	ABB
Environmental Science	MSci	F850	AAB
<b>Film Studies</b>			
Film and Creative Writing	BA	PW38	ABB
Film and English Literature	BA	PQ33	AAB
Film and Philosophy	BA	PV35	ABB
Film and Sociology	BA	PL33	ABB
Film and Theatre	BA	PW34	ABB
Film Studies	BA	P303	ABB
Film, Media and Cultural Studies	BA	PL36	ABB
<b>Geography</b>			
Geography	BA	L700	ABB
Geography	BSc	F800	ABB
Geography	MArtS	L702	AAB
Geography	MSci	4R61	AAB
Geography and Economics	BA	LL71	ABB
Human Geography	BA	L720	ABB
Physical Geography	BSc	F840	ABB
Physical Geography	MSci	4R63	AAB
<b>History</b>			
History	BA	V100	AAB
History and International Relations	BA	VL12	AAB
History and Philosophy	BA	VVC5	AAB
History and Politics	BA	LV21	AAB
History, Philosophy and Politics	BA	V0L0	AAB
Medieval and Early Modern Studies	BA	V125	AAB
<b>Languages</b>			
Chinese Studies and English Literature	BA	T1Q3	AAB
Chinese Studies and Film	BA	T1P3	ABB
Chinese Studies and French Studies	BA	R1T1	ABB
Chinese Studies and German Studies	BA	R2T1	ABB
Chinese Studies and History	BA	T1V1	AAB
Chinese Studies and Linguistics	BA	T1Q1	AAB
Chinese Studies and Mathematics	BA	T1G1	AAB
Chinese Studies and Philosophy	BA	T1V5	ABB
Chinese Studies and Politics	BA	T1L2	ABB
Chinese Studies and Spanish Studies	BA	R4T1	ABB

UNDERGRADUATE	Degree (Hons)	UCAS Code	Typical offer
French Studies	BA	R120	ABB
French Studies and Computing	BSc	GR41	AAB
French Studies and English Literature	BA	RQ13	AAB
French Studies and Film	BA	R1P3	ABB
French Studies and Geography	BA	LR71	ABB
French Studies and German Studies	BA	RR12	ABB
French Studies and History	BA	RV11	AAB
French Studies and Linguistics	BA	QR11	AAB
French Studies and Mathematics	BA	GR11	AAB
French Studies and Philosophy	BA	RV15	ABB
French Studies and Politics	BA	RL12	ABB
French Studies and Spanish Studies	BA	RR14	ABB
French Studies and Theatre	BA	WR41	ABB
French Studies with Italian	BA	R1R3	ABB
German Studies	BA	R220	ABB
German Studies and Computing	BSc	GR42	AAB
German Studies and English Literature	BA	RQ23	AAB
German Studies and Film	BA	R2P3	ABB
German Studies and Geography	BA	LR72	ABB
German Studies and History	BA	RV21	AAB
German Studies and Linguistics	BA	QR12	AAB
German Studies and Mathematics	BA	GR12	AAB
German Studies and Philosophy	BA	RV25	ABB
German Studies and Politics	BA	RL22	ABB
German Studies and Spanish Studies	BA	RR24	ABB
German Studies and Theatre	BA	WR42	ABB
German Studies with Italian	BA	R2R3	ABB
Management and French Studies	BA	RN12	ABB
Management and German Studies	BA	RN41	ABB
Management and Spanish Studies	BA	RN22	ABB
Modern Languages	BA	R800	ABB
Modern Languages and Cultures	MLang	R810	AAB
Spanish Studies	BA	R410	ABB
Spanish Studies and Computing	BSc	GR44	AAB
Spanish Studies and English Literature	BA	RQ43	AAB
Spanish Studies and Film	BA	R4P3	ABB
Spanish Studies and Geography	BA	LR74	ABB
Spanish Studies and History	BA	RV41	AAB
Spanish Studies and Linguistics	BA	QR14	AAB
Spanish Studies and Mathematics	BA	GR14	AAB
Spanish Studies and Philosophy	BA	RV45	ABB
Spanish Studies and Politics	BA	RL42	ABB
Spanish Studies and Theatre	BA	WR44	ABB
Spanish Studies with Italian	BA	R4R3	ABB
<b>Law</b>			
Law	LLB	M100	AAB
Law (Clinical Learning)	LLB	M103	AAB
Law (International Law)	LLB	M102	AAB
Law with Criminology	LLB	MM12	AAB
Law with Politics	LLB	M1L2	AAB

UNDERGRADUATE	Degree (Hons)	UCAS Code	Typical offer
<b>Management/Business</b>			
Business Management	BSc	N102	ABB
Business Management (Entrepreneurship)	BSc	N1N2	ABB
International Business Management (Canada – Brock University)	BSc	N202	AAB
International Business Management (France)	BSc	N2R1	AAB
International Business Management (Germany)	BSc	N2R2	AAB
International Business Management (Italy)	BSc	N2R3	AAB
International Business Management (Mexico)	BSc	N2R5	AAB
International Business Management (Spain)	BSc	N2R4	AAB
International Management	BSc	N123	ABB
Management and Human Resources	BSc	N600	ABB
Management and Information Technology	BSc	GN51	ABB
<b>Marketing</b>			
Advertising and Marketing	BA	N501	AAB
Marketing	BSc	N500	ABB
Marketing and Design	BSc	NW52	AAB
Marketing Management	BSc	N503	AAB
Marketing with Psychology	BSc	N5C8	AAB
<b>Mathematics and Statistics</b>			
Financial Mathematics	BSc	GN13	AAA
Financial Mathematics	MSci	GN1H	A*AA
Mathematics	BSc	G100	AAA
Mathematics	MSci	G101	A*AA
Mathematics and Philosophy	BA	GV15	AAA
Mathematics with Statistics	BSc	G1G3	AAA
Mathematics with Statistics	MSci	G1GJ	A*AA
Mathematics, Operational Research, Statistics and Economics (MORSE)	BSc	GLN0	AAA
<b>Media and Cultural Studies</b>			
Media and Cultural Studies	BA	LP63	ABB
<b>Medicine and Surgery</b>			
Medicine and Surgery	MChB	A100	AAA
Medicine and Surgery with a Gateway Year	MChB	A104	ABB
<b>Natural Sciences</b>			
Natural Sciences	BSc	GFC0	AAA
Natural Sciences	MSci	FCF3	AAA

UNDERGRADUATE	Degree (Hons)	UCAS Code	Typical offer
<b>Philosophy</b>			
Philosophy	BA	V500	ABB
Philosophy and Politics	BA	VL52	ABB
Philosophy, Politics and Economics	BA	LOV0	AAB
<b>Physics</b>			
Physics	BSc	F300	AAA
Physics	MPhys	F303	AAA
Physics with Astrophysics	BSc	F3FM	AAA
Physics with Astrophysics	MPhys	F3F5	AAA
Theoretical Physics	BSc	F340	AAA
Theoretical Physics	MPhys	F321	AAA
Theoretical Physics with Mathematics	BSc	F3GC	AAA
Theoretical Physics with Mathematics	MSci	F3G1	AAA
<b>Politics, Religion and International Relations</b>			
Global Religions and International Relations	BA	VL01	ABB
Global Religions and Philosophy	BA	V651	ABB
Global Religions and Politics	BA	LV01	ABB
International Relations	BA	6T99	ABB
Peace Studies and International Relations	BA	LL92	ABB
Politics	BA	L200	ABB
Politics and International Relations	BA	L250	ABB
Politics and Sociology	BA	LL23	ABB
Politics, International Relations and Management	BSc	LN30	ABB
<b>Psychology</b>			
Psychology	BA	C802	AAB
Psychology	BSc	C800	AAB
Psychology and Chinese Studies	BA	C8T1	AAB
Psychology and French Studies	BA	CR81	AAB
Psychology and German Studies	BA	CR82	AAB
Psychology and Linguistics	BA	CQ81	AAB
Psychology and Management	BA	CN82	AAB
Psychology and Spanish Studies	BA	CR84	AAB
<b>Social Work</b>			
Social Work	BA	L500	BBB
<b>Sociology</b>			
Sociology	BA	L300	ABB
<b>Sports and Exercise Science</b>			
Sports and Exercise Science	BSc	C600	AAB
<b>Zoology</b>			
Zoology	BSc	C300	AAB

## Our courses

POSTGRADUATE	Degree (Hons)
<b>Accounting and Finance</b>	
Accounting and Finance	PhD
Accounting and Financial Management	MSc
Finance	MSc
Investment Management and Financial Analysis	MSc
<b>Architecture</b>	
Architecture (Master of)	MArch
Architecture	PhD
<b>Art and Design</b>	
Art	PhD
Arts Management	MA
Contemporary Arts	PhD
Design	PhD
Design Management	MA
Fine Art	MA
<b>Biological Sciences</b>	
Biological Science	PhD
Food Challenges for the 21st Century (Distance Learning)	PgCert
Food Security (Distance Learning)	PgDip/MSc
Plant Sciences	MSc (by Research)
<b>Biomedical Science/Biomedicine</b>	
Biomedical and Life Sciences	MPhil/PhD
Biomedical Science	MSc (by Research)
Biomedicine	MSc
<b>Chemistry</b>	
Chemistry	MSc (by Research)
Chemistry	PhD
Materials Science	MSc (by Research)
Materials Science	PhD
<b>Criminology</b>	
Criminal Justice and Social Research Methods	MSc
Criminology	PhD
Criminology and Criminal Justice	LLM/MA
Criminology and Social Research Methods	MSc
<b>Data, Computing and Communications</b>	
Communication Systems	MSc (by Research)
Communication Systems	PhD
Computer Science	MSc (by Research)
Computer Science	MPhil/PhD
Cyber Security	MSc
Data Science	PgCert/PgDip/MSc

POSTGRADUATE	Degree (Hons)
<b>Drama, Theatre and Performance</b>	
Theatre for Social, Political and Environmental Change	MA
Theatre Studies	PhD
<b>Ecology and Conservation</b>	
Conservation and Biodiversity	MSc
Ecology	MSc (by Research)
<b>Economics</b>	
Economics	MSc
Economics	PhD/PhD (Integrated)
Money, Banking and Finance	MSc
<b>Education Studies</b>	
E-Research and Technology Enhanced Learning (by course work and thesis)	PhD
Education and Social Justice (Distance Learning)	MA
Education and Social Justice (thesis and coursework)	PhD
Educational Research (Independent Study)	PhD
Educational Research - Higher Education (thesis and coursework)	PhD
Higher Education: Research, Evaluation and Enhancement	PhD
<b>Engineering</b>	
Advanced Mechanical Engineering	MSc
Electronic Engineering	MSc
Engineering	MSc (by Research)
Engineering	MPhil/PhD
Engineering Project Management	MSc
Mechanical Engineering with Project Management	MSc
<b>English Language, Linguistics and TESOL</b>	
Applied Linguistics and TESOL	MA
Corpus Linguistics (Distance Learning)	PgCert/MA
Discourse Studies	MA
Intercultural Communication	MA
Language and Linguistics	MA
Language Testing (Distance Learning)	PgCert/MA
Linguistics	PhD
Linguistics (by thesis and coursework)	PhD
TESOL (Teaching English to Speakers of Other Languages) (Distance)	PgCert
TESOL (Teaching English to Speakers of Other Languages) with Corpus Linguistics (Distance)	MA
TESOL (Teaching English to Speakers of Other Languages) with Language Testing (Distance)	MA

POSTGRADUATE	Degree (Hons)
<b>English Literature and Creative Writing</b>	
Creative Writing	PhD
Creative Writing (Distance Learning)	MA
Creative Writing (Modular)	MA
Creative Writing with English Literary Studies	MA
English Literary Research	MA
English Literary Studies	MA
English Literary Studies with Creative Writing	MA
English Literature	PhD
English Literature and Creative Writing	PhD
<b>Entrepreneurship</b>	
Entrepreneurship and Innovation	MSc
International Business and Strategy	MSc
Strategy	MSc
<b>Environmental and Earth Sciences</b>	
Environment and Development	MSc
Environmental Management	MSc
Environmental Science	MSc (by Research)
Environmental Science	PhD
Flood and Coastal Risk Management	PgCert/PgDip/MSc
Geography	MPhil/PhD
Political Ecology	MA
Sustainable Water Management	MSc
Volcanology and the Environment	MSc
<b>Film Studies</b>	
Film	PhD
Film Studies	MA
<b>Health Studies</b>	
Ageing	MSc
Ageing	PhD
Clinical Psychology	DClinPsy
Dementia Studies	PhD
Health Economics and Policy	MSc
Health Economics and Policy	PhD
Health Research	PhD
Mental Health	PhD
Organisational Health and Well-Being	PhD
Palliative Care	PhD
Public Health	PhD
<b>History</b>	
Digital Humanities	MA
History	MA
History	MPhil/PhD
International and Military History	MA
Regional and Local History (Distance Learning)	PgCert
War and Diplomacy	MA

POSTGRADUATE	Degree (Hons)
<b>Human Resources</b>	
Human Resource Management	MSc
Human Resources and Consulting	MA
Organisation Development	PgCert
<b>Language, Culture and Translation</b>	
Languages and Cultures	MA (by Research)
Languages and Cultures	PhD
Translation	MA
Translation	PhD
<b>Law</b>	
Environment and Law	LLM
International Business and Corporate Law	LLM
International Human Rights Law	LLM
International Law	LLM
International Law and International Relations	LLM/MA
Law	LLM
Law	MPhil/PhD
Law	LLM (by Research)
<b>Management and Business</b>	
Business Analytics	MSc
Digital Business, Innovation and Management	MSc
Innovation and Improvement Science	PgCert/PgDip/MSc
International Masters Program for Managers	-
Leadership and Management	PgCert
Leadership and Management (Health Care)	PgCert
Leadership Practice	PgDip/MSc
Logistics and Supply Chain Management	MSc
Management	MSc
Management (Entrepreneurship and Strategy)	PhD
Management (Organisation, Work and Technology)	PhD
Management Science	MRes
Management Science	PhD/PhD (Integrated)
Medical Leadership	PgCert/PgDip/MSc
Organisation, Work and Technology	MRes
Professional Development	PgCert
Professional Practice	PgCert/PgDip MA/MSc
Project Management	MSc
Theory and Practice of Management	PhD
<b>MBA and Executive MBA</b>	
Business Administration	MBA
Business Administration (Executive)	MBA
Cyber Security Executive MBA	MBA

## Our courses

POSTGRADUATE	Degree (Hons)
<b>Marketing</b>	
Advanced Marketing Management	MRes/MSc
Marketing	MSc
Marketing	PhD
<b>Mathematics and Statistics</b>	
Mathematics	PhD
Social Statistics	PhD
Statistics	PgDip/MSc
Statistics	PhD/PhD (Integrated)
Statistics and Operational Research	MRes
Statistics and Operational Research (STOR-i)	PhD
<b>Media and Cultural Studies</b>	
Media and Cultural Studies	MA
Media and Cultural Studies	PhD
<b>Medicine</b>	
Clinical Research	PgCert/PgDip/MSc
Health Data Science	MSc
Health Data Science	PhD
Medical Ethics and Law	PhD
Medical Sciences	MSc (by Research)
Medicine	MD/PhD
Social and Behavioural Sciences in Medicine	PhD
Sports and Exercise Sciences	PhD
Statistics and Epidemiology	PhD
<b>Natural Sciences</b>	
Natural Sciences	MSc (by Research)
Natural Sciences	PhD
<b>Philosophy</b>	
Philosophy	PgCert/MA
Philosophy	PhD
Philosophy and Religion	MA
<b>Physics</b>	
Nanoscience	PhD
Physics	MSc (by Research)
Physics	PhD
<b>Politics and International Relations</b>	
Conflict Resolution and Peace Studies	MA
Conflict, Development and Security	MA
Diplomacy and Foreign Policy	MA
Diplomacy and International Law	LLM/MA
Diplomacy and International Law (Distance Learning)	LLM/MA
Diplomacy and International Relations (Distance Learning)	MA
International Relations	MA
International Relations	PhD

POSTGRADUATE	Degree (Hons)
Politics	MA
Politics	PhD
Politics and International Relations	PgCert
Politics and Philosophy	MA
Politics, Philosophy and Management	MSc
Public Policy	MSc
<b>Psychology</b>	
Developmental Disorders	MSc
Developmental Psychology	MSc
Psychological Research Methods	MSc
Psychology	PhD
Psychology of Advertising	MSc
<b>Religious Studies</b>	
Diplomacy and Religion	MA
Religion and Conflict	MA
Religious Studies	PgCert/MA
Religious Studies	PhD
<b>Sociology</b>	
Applied Social Science	PhD
Environment and Society	PhD
Environment, Culture and Society	MA
Gender Studies	MA
Gender Studies	PhD
Gender Studies and English	MA
Science Studies	PhD
Social Research	MA
Sociology	MA
Sociology	PhD

For more information, please visit [lancaster.ac.uk](http://lancaster.ac.uk)







# Entry requirements

Lancaster has been welcoming students from around the globe for many years. We have a lot of experience with the different education systems across the world. To study at Lancaster, you need to ensure you meet our academic entry requirements. If your first language is not English, you will also be asked for a recognised English language qualification.

## Undergraduate

For undergraduate study, the exact grades that we require will vary according to the degree scheme and some programmes may require you to have a qualification in a specific subject.

If you are studying A levels or the International Baccalaureate you will find our entry grades at [lancaster.ac.uk/ug-courses](https://www.lancaster.ac.uk/ug-courses).

You will find a detailed list of other qualifications that we accept at [lancaster.ac.uk/ug-entry-requirements](https://www.lancaster.ac.uk/ug-entry-requirements).

If you are unsure, or if your country isn't listed, then please contact the Admissions team for advice by emailing [ugadmissions@lancaster.ac.uk](mailto:ugadmissions@lancaster.ac.uk).

A level	International Baccalaureate
AAA	36 pts with 16 pts from 3 HL courses
AAB	35 pts with 16 pts from 3 HL courses
ABB	32 pts with 16 pts from 3 HL courses

## Postgraduate

For postgraduate study we accept a range of international qualifications, please visit our website for details. For a detailed list of how Lancaster University academic entry requirements match the qualifications from your country, please visit [lancaster.ac.uk/pg-international-qualifications](https://www.lancaster.ac.uk/pg-international-qualifications).

If you are unsure, or if your country isn't listed, then please contact the Admissions team for advice by emailing [pgadmissions@lancaster.ac.uk](mailto:pgadmissions@lancaster.ac.uk).

## Foundation and pre-master's

Depending on your educational background, you may need to complete a foundation programme in order to begin your UK undergraduate degree.

If you are looking to study a postgraduate qualification, you may first need to complete a pre-master's programme.

Don't meet the English language requirements of your chosen course? Complete a stand-alone academic English programme, or combine academic English with your pathway for a seamless transition to further studies.

## English language requirements

If your native language is not English, you will need to ensure that you meet our minimum English language standards. The level we require will depend on the programme you wish to study. More details can be found online at [lancaster.ac.uk/english-requirements](https://www.lancaster.ac.uk/english-requirements).

## Pre-sessional English courses

If you have taken an approved English language test but do not meet the minimum entry requirements for your chosen degree scheme, you may be eligible to take one of our pre-sessional English language courses to bring you up to the required level. Visit our website for more information at [lancaster.ac.uk/pre-sessional](https://www.lancaster.ac.uk/pre-sessional).

# How to apply

## Undergraduate

Applications to full-time undergraduate courses are made via UCAS at [ucas.com](https://ucas.com). Your school or college should be able to assist you with your application, or you may wish to contact a British Council Office or use an international agency for support. If you have already left school or college, you'll find advice on how to apply on the UCAS website or you can contact our Admissions team.

The information provided in this prospectus gives a guide to our courses offered and the entry requirements, but from time to time these may change. We advise all applicants to visit our online course pages prior to making an application at [lancaster.ac.uk/ug-courses](https://lancaster.ac.uk/ug-courses).

[lancaster.ac.uk/ug-admissions](https://lancaster.ac.uk/ug-admissions).

### Application deadlines

The closing date for applications for Medicine is Monday 16 October 2023. For all other courses, the applications should be submitted by the UCAS deadline of Wednesday 31 January 2024. Some courses may accept applications after this date, if places are available, up until 30 June. For the 2024 application deadlines, please visit [ucas.com](https://ucas.com).

### After you've applied

We consider applications from the beginning of the admissions cycle, usually on a rolling basis. We aim to reply with a decision or an invitation to an interview within three to four weeks of applying.

We provide information on visas and immigration before you leave your home country and can even pick you up from Manchester Airport. Once you arrive on campus, you'll find a series of events to get you settled, with plenty of ongoing support.

## Postgraduate

You can apply for most postgraduate programmes using our online applications portal, but a few require you to apply through a different route. For example, an external agency administers applications for the Doctorate in Clinical Psychology (DClinPsy). You will find information about any external application processes on our online course pages.

Find out more information about applying at [lancaster.ac.uk/pg-apply](https://lancaster.ac.uk/pg-apply).

If you want to apply for a postgraduate research degree, we advise you to consult our departmental web pages prior to submitting an application to pinpoint your research area and investigate whether supervision is available at Lancaster University. For the majority of our research programmes, we recommend that you identify a potential supervisor prior to submitting a formal application. Once you have identified a potential supervisor you should apply by using our online application form. As part of your application, you may be required to provide a research proposal. Visit our website for guidance on how to write a research proposal at [lancaster.ac.uk/research-proposal](https://lancaster.ac.uk/research-proposal).

We do offer some funded PhD studentships, and information about these can be found on our departmental web pages. If you are applying for one of these, please follow the instructions on how to apply as it can vary depending on the funding body and area of research.

### What do I need to include with my application?

The online applications portal will guide you through the details that you need to provide, and the supporting documentation screen will provide you with a list of required documents.

These will usually include:

- Degree certificates and transcripts of previous higher education (college/university) degrees. For transcripts in languages other than English, a certified English translation will be required
- Personal statement
- Reference(s) (we can automatically contact your referees once you have submitted your application, if you ask us to)
- Research proposal (for research degrees)
- If English is not your first language, a copy of your English language test result

Some of our courses have specific requirements for the research proposal. Information about the requirements and guidance on how to write a research proposal can be found on our website.



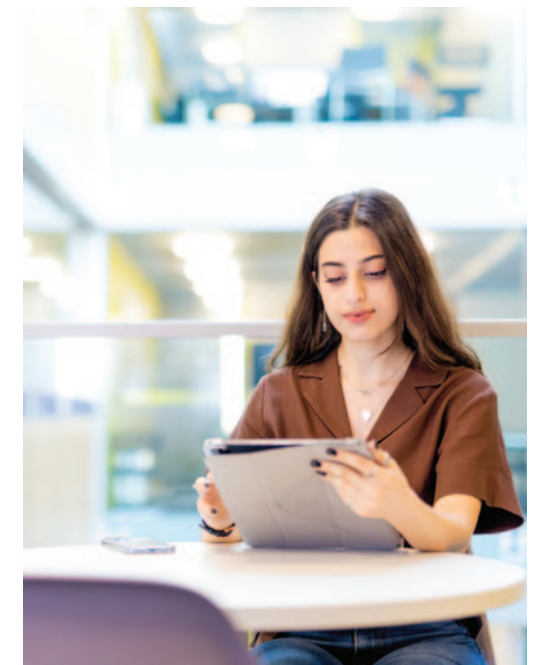
### Admissions team

#### Undergraduate

+44 (0)1524 592028  
[ugadmissions@lancaster.ac.uk](mailto:ugadmissions@lancaster.ac.uk)

#### Postgraduate

+44 (0)1524 592032  
[pgadmissions@lancaster.ac.uk](mailto:pgadmissions@lancaster.ac.uk)



# Where we are



## Train journey times



For more information, please visit [lancaster.ac.uk](http://lancaster.ac.uk)

# Getting to Lancaster

Our campus is around three miles south of the City of Lancaster.

## By bus and coach

Most students at Lancaster use the bus for travelling around. Bus services operate throughout the campus, with the main bus stop located in the underpass, directly underneath Alexandra Square. From here, there are at least 14 buses every hour to the city centre during term-time daytimes. Megabus and Flixbus also serve the campus daily.

Find out more at [lancaster.ac.uk/bus-travel](http://lancaster.ac.uk/bus-travel).

## By bicycle

Cycling is very popular at Lancaster. There is a signed cycle route to the city centre from the campus, which takes around 20 minutes to cycle. Bicycle parking is provided across campus and in the city.

Find out more at [lancaster.ac.uk/cycling](http://lancaster.ac.uk/cycling).

## By rail

Lancaster is on the West Coast Main Line with fast and frequent rail services to destinations across the UK. Lancaster Railway Station is situated a five-minute walk from the city centre. There is a direct bus service to the station from the campus.

## By car

The University is located two miles from Junction 33 of the M6 motorway. Parking permits are available for students who meet one of the qualifying criteria. Visitor parking is available in the pay and display visitor car parks. Charges apply Monday to Friday 08:00 to 18:00. Electric vehicle charging points are available.

## By air

Lancaster University is about an hour's drive from Manchester International Airport. An hourly rail link from the airport to Lancaster takes around one hour 20 minutes. The University provides a coach shuttle service from Manchester Airport to the campus at the start of the academic year.



SCAN ME

# Stay connected

**Our friendly staff will help you throughout your application and arrival to Lancaster.**

## General enquiries

internationalrecruitment@lancaster.ac.uk  
[lancaster.ac.uk/international-team](https://www.lancaster.ac.uk/international-team).

## Online events

We offer a wide variety of online events to help you get an idea of Lancaster and our programmes.

Find out about student life at Lancaster, our colleges and accommodation, or join a live chat with students and staff. Online events run all year round, so don't wait, see what events are coming up by visiting [lancaster.ac.uk/study/find-out-more](https://www.lancaster.ac.uk/study/find-out-more).

## Virtual tours

You don't have to leave home to see our stunning campus, thanks to our virtual tour. From a range of videos to a series of 360-degree panoramas, we have everything you need to find out what it's like here at Lancaster on our website. [lancaster.ac.uk/virtual-tour](https://www.lancaster.ac.uk/virtual-tour).



SCAN ME



## Visit campus

Our green and spacious campus is open to the public all year round, so if you are in the UK, you can visit and explore whenever you please. Taking a campus tour with a current student is the best way to discover the campus and you can ask questions at the same time. The Welcome Centre, staffed by student ambassadors, is the perfect place to start on any visit to campus. We encourage you to contact us before visiting to check the Welcome Centre's opening hours and book a campus tour.

[lancaster.ac.uk/campus-tours](https://www.lancaster.ac.uk/campus-tours).

## Events for your region

We regularly host and attend events to meet overseas students interested in studying with us. Find out about our latest international events at [lancaster.ac.uk/international-student-events](https://www.lancaster.ac.uk/international-student-events).

We also work with representatives in many countries. For more information, please visit [lancaster.ac.uk/find-an-agent](https://www.lancaster.ac.uk/find-an-agent).

## Talk to students

Got a question about student life, a course or Lancaster in general? Then get in touch with one of our friendly student ambassadors, or read one of their blogs to find out more about their life at Lancaster University.

[lancaster.ac.uk/chat](https://www.lancaster.ac.uk/chat).

## Useful websites

British Council  
[britishcouncil.org](https://www.britishcouncil.org).

UK visas and immigration  
[gov.uk](https://www.gov.uk).

UCAS  
[ucas.com](https://www.ucas.com).

# Important information

The information in this publication relates primarily to 2024–25 entry to the University and every effort has been taken to ensure the information is correct at the time of printing July 2023.

The University will use all reasonable effort to deliver the courses as described but the University reserves the right to make changes after going to print. In exceptional circumstances that are beyond the University's reasonable control (Force Majeure Events), we may need to amend the programmes and provision advertised. However, in this event, the University will take reasonable steps to minimise the disruption to your studies. You are advised to consult our website at [lancaster.ac.uk/study](https://www.lancaster.ac.uk/study) for up-to-date information before you submit your application. More information on limits to the University's liability can be found in the Student Contract at [lancaster.ac.uk/terms](https://www.lancaster.ac.uk/terms). Further legal information may be found at [lancaster.ac.uk/compliance/legalnotice](https://www.lancaster.ac.uk/compliance/legalnotice).

## Contract terms for students

The University strives to provide excellence in teaching and research, and to enhance the student experience by focusing on the needs of our students and by seeking to instil a shared sense of inclusiveness, collegiality and community. Underpinning this partnership, the University has a supportive set of regulations, policies and procedures, which are designed to protect and maintain both academic quality and your rights and responsibilities as students of our University. The Student Contract sets out these rights and responsibilities, and states the obligations of both parties to each other. Further information can be found at [lancaster.ac.uk/terms](https://www.lancaster.ac.uk/terms).

## Placement Year

The University will use all reasonable effort to support you to find a suitable placement for your studies. If you are unsuccessful in securing a suitable placement for your third year, you will be able to transfer to the equivalent, non-placement degree scheme and would continue with your studies at Lancaster, finishing your degree after your third year.

## Study Abroad

The University will make reasonable endeavours to place students at an approved overseas partner university that offers appropriate modules, which contribute credits to your Lancaster degree. Occasionally places overseas may not be available for all students who want to study abroad or the place at the partner university may be withdrawn if core modules are unavailable. If you are not offered a place to study overseas, you will be able to transfer to the equivalent standard degree scheme and would complete your studies at Lancaster.





Lancaster University, Lancaster, LA1 4YW  
+44 (0)1524 65201  
[lancaster.ac.uk](http://lancaster.ac.uk)

