

Linguistics and English language

Postgraduate Studies 2023



Welcome

The Department of Linguistics and English Language at Lancaster University has consistently been ranked among the best in the world. In 2022, we came 12th in the QS World University Rankings.

We are the largest Linguistics Department in England, offering an unrivalled range of expertise, particularly in empirical and applied aspects of linguistics.

Contents

- 02 Welcome
- 03 Teaching and learning
- 04 MA level programmes
- 06 Difference between MA and a Postgraduate Certificate
- 06 Scholarships and funding
- 07 Meet our students
- 08 PhD programmes
- 08 Individual courses (for credit)
- 09 How to apply

Get in touch

Department of Linguistics and English Language
County South
Lancaster University
Lancaster
LA1 4YL
United Kingdom
E: postgraduatelinguistics@lancaster.ac.uk
www.lancaster.ac.uk/linguistics
Message a student: www.lancaster.ac.uk/chat

Connect with us



[Linguistics and English Language](#)



[@LAEL_LU](#)



Teaching and Learning

Our facilities

We have outstanding laboratory facilities, and are home to the British National Corpus, the famous multi-million word language resource, the latest version of which we released at the end of 2021. These facilities are used by students and staff for a variety of research projects.



We are equipped with four state-of-the-art labs:

- Child language laboratory
- EEG laboratory
- Eye-tracking laboratory
- Phonetics laboratory

We have a large research centre for corpus linguistics with one of the best collections of digital corpora in the world.

We specialise in the following areas:

- Corpus Linguistics
- Cognitive Linguistics
- Language Learning
- Language Teaching (TESOL)
- Language Testing
- Discourse Analysis
- Pragmatics
- Speech Science

Our community

Students who do our postgraduate degrees (MAs, PgCerts and PhDs), join the largest community of postgraduate Linguistic students in the UK – approximately 300 students at any one time. This creates a vibrant community of international scholars.



Our department

The Linguistics department at Lancaster is internationally renowned for its research and innovation in a wide range of fields.

It came 1st for Graduate Prospects and 7th for Linguistics in the UK in The Complete University Guide 2022.

Our university

Lancaster University opened in 1964 with an intake of just 330 students; today it is a major research university with over 15,000 students from all over the world.

It is a campus university— it is 3 miles from the city centre and spans across 500 acres of parkland.



Our city

In 2021, it was ranked one of the top 10 universities in the UK by The Independent, The Guardian, and The Times.

Lancaster began as a Roman settlement on the banks of the river Lune.

It is next to the Lake District and Morecambe Bay, areas of outstanding natural beauty.

It has a large, medieval castle where executions were held. It is now owned by the King, and is no longer used for this purpose (phew)!



Our Programmes

At Lancaster, you can find the right programme for you regardless of your background or previous experience. You can study on campus or online, full time or part-time.

On campus MA programme

- MA Applied Linguistics and TESOL
- MA Discourse Studies
- MA Intercultural Communication
- MA Language and Linguistics

Online (distance) programmes

- MA/PgCert Corpus Linguistics
- MA/PgCert Language Testing
- MA TESOL with Corpus linguistics
- MA TESOL with Language Testing
- PgCert TESOL



“We look forward to welcoming you to the world of Linguistics at Lancaster!”

— Professor Jonathan Culpeper, Head of the Department.

On-Campus Programmes

Applied Linguistics and TESOL MA

This degree provides a programme suitable for those currently working as language teachers, those who plan to work as language teachers in the future, and those who simply have a strong interest in language learning and teaching.

Core modules cover key themes of linguistics and academic study skills, complemented by optional modules that can be chosen from a range of specialised or broader topics.

Discourse Studies MA

This programme includes three core modules which cover key theories, methods, and applications of Discourse Studies. The fourth core module is on Research Methods in Linguistics and English Language, which provides an essential grounding in the research skills you will be using in the programme.

You will develop skills in discourse analysis, drawing on a range of methodological sources: pragmatics and conversation analysis, argumentation theory, functional grammar, cognitive linguistics, and corpus linguistics. As part of your coursework, you will have the opportunity to apply these skills by analysing a range of spoken and written data from different social contexts including politics, media, literature, and education.

Intercultural Communication MA

This programme deepens an understanding of communication across cultures by drawing on both linguistic and social theory. You will take two core modules on intercultural communication which discusses subjects such as business, education and health. You will also complete one core module on Research Methods in Linguistics and English Language, which provides an essential grounding in the research skills you will be using in the programme.

This programme culminates in a 12,500-word dissertation about a topic of your choosing related to Intercultural Communication.

Language and Linguistics MA

This flexible programme allows you to develop your specialist interests in a particular area or to combine different areas of study in Language and Linguistics. There is one core module on Research Methods in Linguistics and English Language, which provides an essential grounding in the various research skills and methods involved in studying language.

There is a wide choice of optional modules, enabling you tailor the programme to your own interests. You may choose to specialise in a particular area of Language and Linguistics by selecting modules relating to different themes.

Online Programmes

Our distance learning postgraduate courses are aimed at those wishing to enhance their careers from home, work, wherever and whenever is convenient.

You can gain relevant knowledge and skills by studying alongside your ongoing professional and personal commitments.

Corpus Linguistics MA/PgCert

We offer one-year PGCert and two-year MA programme in Corpus linguistics. You will develop core skills that will allow you to analyse large amounts of linguistic data (corpora) using cutting-edge computational technology.

In addition, you will learn how to collect and compile your own corpora and will discover new things about the structure of the English language.

Corpus Linguistics: Mooc entry route

This programme offers you an opportunity to take a free eight-week MOOC in Corpus linguistics and then join either the MA or the PGCert programme in corpus linguistics and have the MOOC counted as a module on the programme.

This gives you the possibility to try learning corpus linguistics for free for one term without any obligations and then decide if you'd like to study corpus linguistics at Lancaster for a full degree.



Language Testing MA/PgCert

We offer one-year PGCert and two-year MA programme in Language testing. These programmes will give you a solid grounding in language test design, construction and evaluation. We aim to support you in creating testing and evaluation procedures and policy within your own context that conform to international standards of validity and reliability. The programmes consider major developments in language testing in recent years and reflect current thinking and good practice.

TESOL with Corpus Linguistics MA

This innovative course is designed for prospective and experienced language teachers and language professionals. In the course, you will learn about applications of corpora for a variety of areas of language teaching such as English for Specific Purposes and teaching materials development. The course allows you to focus your coursework and dissertation on issues and problems pertinent to your own professional context.

TESOL with Language Testing MA

This course is designed for language teachers who, in addition to broadening their knowledge-base on second language learning and up-to-date teaching methodology, want to gain expertise in second language test construction and evaluation.

We aim to equip you with up-to-date knowledge and skills that will enable you to work in a variety of language teaching and assessment contexts.

TESOL with Language Testing PgCert

This course is suitable for prospective and experienced language teachers and language professionals who have an interest in second language learning and teaching in classroom contexts and at wider national and international levels. We aim to equip you with up-to-date knowledge and skills that will enable you to work in a variety of language teaching contexts.

On successful completion, this course allows progression to one of our Master level courses: MA in TESOL with Language Testing (one year teaching / assessment experience is required) or MA in TESOL with Corpus Linguistics (no teaching experience is required).

What is the difference between an MA and a Postgraduate Certificate?

MA degrees are taught programmes with several optional modules. They allow you to develop knowledge in specific areas and acquire transferable research skills. It includes a dissertation, in which you explore a topic of your interest.



Postgraduate Certificates are similar to MA programmes and cover the same core topics, only on a smaller scale. PG programmes are taught online, and do not include the dissertation component. You can still choose to pursue an MA after completing a Postgraduate Certificate.



Shengnan

Why did you decide to study language and linguistics at Lancaster?

I was very interested in pragmatics, and more specifically linguistic (im)politeness during my MA study, and I referenced a lot of Jonathan Culpeper's work on (im)politeness. That was when I noticed that authors of many famous books I had read, such as Geoffrey Leech and Gu Yueguo, were all from Lancaster University. Then I learned that linguistics at Lancaster had always ranked high within the UK and in the world, and many brilliant linguists studied or worked at Lancaster.

I began to have this goal of becoming a linguist. I wanted a career where I can study fascinating pragmatic phenomena in languages, and I wanted to become one of the best, just like those brilliant linguists who have inspired me. I decided to do a PhD in linguistics with a focus on mock impoliteness. I thought it would be amazing if I can work with Jonathan, so I reached out and applied for the PhD programme at Lancaster University. The day I was offered a place in the programme, I was beyond excitement.

Shengnan Liu
PhD in Linguistics



Scholarships and Funding

At Lancaster, we are investing in the future of our students by enabling access to a world-class education. We believe that funding concerns should not stop any student with the talent to thrive.

The [scholarship and funding information](#) web pages provide details of current funding opportunities for Masters and PhD students.



Alexandra

Alexandra has received a bursary to take our **Corpus Linguistics (Distance) MA**.

Can you tell us a little bit about your background and research interests?

Applying for this program represents a major pivot in my life - I already have a PhD in genetics and worked for several years as a researcher in a lab. But something was missing for me and a few years ago, I stepped away from the bench and turned towards the communication side of science, spending a few years helping scientists edit and revise papers for publication, which led to my current position, teaching academic writing to English language learners.



Why have you applied to study MA in Corpus linguistics at Lancaster University?

My career goal is to have a position in academia that combines teaching, research and supervision of graduate students, but I feel that I need additional qualifications to achieve my goals. I have been contemplating an MA in applied linguistics for several years as a way to acquire research training and qualifications in this field. In parallel, I became aware of Lancaster University as one of the leaders in the field of corpus linguistics by reading literature and taking part in the Corpus Linguistics MOOC on FutureLearn. Last fall, when I saw the announcement for this new distance MA program in corpus linguistics, I knew it was time to apply!

Alexandra Terashim
Corpus Linguistics (Distance) MA

Sam

What is your experience studying at Lancaster?

There are so many different intellectual interests represented: in the department's postgraduate conference last year, we attracted hundreds of other postgraduates from around the world to come and attend a two-day conference that we organised on everything from Second Language Acquisition to Psycholinguistics, and Discourse Studies to Pragmatics. There are so many opportunities to get involved in research groups, projects, and real research. It's an excellent choice for a linguistics postgraduate degree!



Sam Oliver
PhD in Linguistics

Ayako

Why did you decide to study language and linguistics at Lancaster?

Not only the high reputation in linguistics but also many papers I have read were written by faculty members and alumni of Lancaster University and felt Lancaster is the right place for me to do my MA to build the foundation as a re-searcher. I also believe that theory and practice are inseparable, and MA in Applied Linguistics and TESOL offers both types of modules, which was a perfect fit for me.

Ayako Aizawa
MA in Applied Linguistics and TESOL



PhD Programmes



PhD Linguistics by research only

The traditional thesis only PhD can be completed on a full or part-time basis. We welcome proposals for doctoral research in any of the Department's many areas of teaching or research.

With over 100 doctoral students studying with us on a full-time or part-time basis, either at Lancaster or off-site, there is a strong doctoral-level research culture in our department.

PhD in Linguistics by thesis and coursework

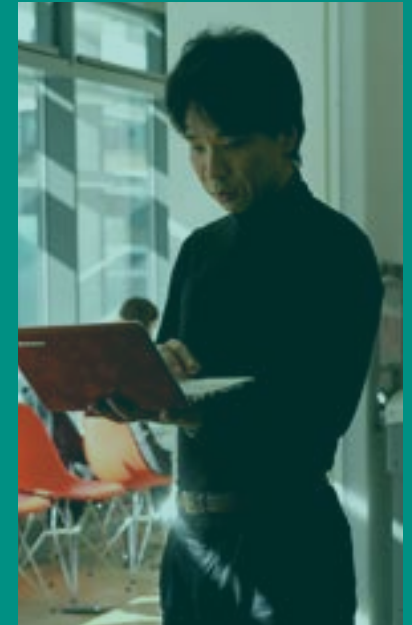
This unique and flexible programme is designed for you to complete your coursework and develop your thesis simultaneously. Initial coursework provides a strong foundation of knowledge and skills as you develop your capacity to engage with theory, critically evaluate previous studies, and carry out independent research.

In your first year, will complete compulsory modules in research methodology and applied linguistics that are taught by distance. In addition, you have the opportunity to take additional modules from the department's MA programmes and the Faculty's Research Training Programme.

Individual Courses (for credit)

As an alternative to taking a complete Master's or Postgraduate Certificate programme, you can take our individual specialist postgraduate courses for institutional credit. These are ideal if you need to develop knowledge and skills in a specific area.

Courses are currently available on topics in Corpus Linguistics and in Language Testing. Each course can be taken separately – they run for one term (three months) and are offered online.



Corpus Linguistics courses

- Fundamentals of corpus linguistics (Term 1: Oct–Dec)
- Corpus based grammar and vocabulary of English (Term 1: Oct–Dec)
- Corpus design and data collection (Term 2: Jan– Mar)
- Corpus based discourse analysis (Term 2: Jan– Mar)
- Using corpora in Language teaching (Term 2: Jan– Mar)
- Statistics and data visualization (Term 3: Apr – Jun)

Language Testing courses

- Language test construction and evaluation (Term 1: Oct–Dec)
- Statistical analysis for language testing (Term 2: Jan–Mar)
- Issues in language testing (Term 3: Apr–Jun)

View our [individual courses for credit](#)

How to apply

Applying to our programmes is easy, and only takes about 5-10 minutes. Simply choose the programme you want, and apply online at:


<https://www.lancaster.ac.uk/study/postgraduate/applying-for-postgraduate-study/>



Get in touch

Department of Linguistics and
English Language
County South
Lancaster University
Lancaster
LA1 4YL
United Kingdom
E: [postgraduatelinguistics@
lancaster.ac.uk](mailto:postgraduatelinguistics@lancaster.ac.uk)
www.lancaster.ac.uk/linguistics

Connect with us

 [Linguistics and English
Language](#)

 [@LAEL_LU](#)